



North Jersey Health Collaborative

health matters

Community Voice Survey

Morris County

September 2018

Prepared for the North Jersey Health Collaborative by Atlantic Health System

ACKNOWLEDGEMENTS

This report was made possible with the support of the North Jersey Health Collaborative (NJHC) organizational partners and the input of community members who shared their perspectives by participating in the *Community Voice Survey*.

We want to acknowledge the dedicated members of the NJHC Data Committee, who provided leadership and guidance for the development of the survey tool, the data collection process, and the analysis and reporting of the data collected.

Members of the North Jersey Health Collaborative Data Committee:

Catherine Connelly, North Jersey Health Collaborative
Don Dykstra, Atlantic Health System
Shanice Johnson, Morris County Office of Health Management
William Kernan, William Paterson University
Lisa Lieberman, Montclair State University
Annie McNair, Union County Office of Health Management
Leslie Franks McRae, North Hudson Community Action Center
Jodi Miciak, United Way of Northern New Jersey
Sarah Perramant, Warren County Health Department
Rajika Reed, St. Luke's University Health Network
Laura Richter, Warren County Department of Human Services
Arlene Stoller, Morris County Office of Health Management
John Volturo, Atlantic Health System
Leigh Ann Von Hagen, Rutgers University/Voorhees Transportation
Trevor Weigle, Mt. Olive Township Health Department

We would also like to thank Ashley Anglin, PhD and Sharon Johnson-Hakim, PhD for their contributions to this, our first, *Community Voice Survey*.

Data analysis was conducted by Karen Shiu-Yee, MPH, Research Associate, Atlantic Health System.

Questions regarding this report and the survey should be directed to Catherine Connelly, NJHC Executive Director, at Catherine.Connelly@njhealthmatters.org.

TABLE OF CONTENTS

Executive Summary	3
Introduction and Background	4
About NJHC	4
About Morris County	4
Purpose of the Community Voice Survey	4
Data Collection Process	5
Main Findings in Morris County	7
Key Health Factors	8
Physical Environment	9
Social and Economic Factors	14
Clinical Care	19
Health Behaviors	24
Most Commonly Identified Health Issues	29
Conclusion	30
Appendix: <i>Community Voice Survey</i> Questionnaire	31

EXECUTIVE SUMMARY

The North Jersey Health Collaborative (NJHC) is an independent 501(c)(3) organization with more than 100 partner organizations working together across sectors to improve the health of communities in Morris, Passaic, Sussex, Union, and Warren counties. In 2018, the Collaborative conducted its first *Community Voice Survey* to identify concerns related to health and well-being that are most important to the people who live and work in the communities it serves. A total of 3,793 individuals from all five counties participated.

The *Community Voice Survey* was an anonymous survey that was either completed online or in hard copy. After data were collected, initial survey findings were compiled and presented to NJHC county partners in each of the counties. In July 2018, the data were presented at the Morris County Public Safety Training Academy.

Between January and May, 2018, a total of 1,811 individuals living in Morris County completed the *Community Voice Survey*. Most (77%) of the survey respondents are female, 40% are 45 to 64 years-old, and 80% identify as non-Hispanic White. More than half (63%) of the survey respondents have at least a Bachelor's degree and 38% consider their household finances to be "very stable" (i.e., they can handle all bills and unexpected expenses or emergencies).

The following are most-often identified by survey respondents in Morris County as issues the NJHC should focus on to improve health and well-being in their communities:

1. Mental health care
2. Pedestrian safety
3. Roads
4. Housing
5. Health insurance

It is important to note that, although the *Community Voice Survey* was designed to reflect a wide range of voices from each of the communities, the data collected are not a statistical representation of Morris County's population. In addition, while the data provide meaningful information about many community members' thoughts and attitudes, they must be viewed within the context of other statistically representative data about the county's health needs and conditions.



INTRODUCTION & BACKGROUND

About NJHC

Established in November 2013, the North Jersey Health Collaborative (NJHC) is an independent, self-governed 501(c)(3) organization with a diverse set of partners representing healthcare, public health, social services, education, and other community-based organizations.

Working together across sectors, the NJHC and its partners seek to establish a more coordinated collective approach to community health improvement. Core functions of the NJHC include: a shared process of community health needs assessment and health improvement planning to target factors that drive poor health, and facilitating the development of collaborative strategies and action plans designed to create communities where opportunities for health and well-being are available for all people.

About Morris County

In 2018, Morris County has a population of 498,852 residents. The median age in the county is 43 years-old. Twenty-two percent of the county's population is under the age of 18 and 17% of the population is 65 or older. Approximately 70% of residents identify as White or Caucasian, 14% identify as Hispanic or Latino, 3% identify as Black or African American, and 11% identify as Asian. The median household income in Morris County in 2018 is \$110,971 with 3% of families living at or below the federal poverty line.

For more complete information about Morris County, visit www.njhealthmatters.org.

Purpose of the *Community Voice Survey*

The *Community Voice Survey* was designed based on requests from NJHC partners who wanted more direct input from people who live and work in our communities in the shared community health needs assessment process. Engaging community members enable NJHC partners to obtain valuable insights about individuals' and communities' health and

well-being that might otherwise be overlooked. Furthermore, allowing community members to share their perspective on their health and the health of their neighborhoods help NJHC partners gain a better understanding of the strengths and needs of our communities, as well as the facilitators and barriers to health and well-being. Results from the *Community Voice Survey* will support the NJHC and its partners to develop and implement more effective strategies to address issues that really matter to the communities' health and well-being.

The *Community Voice Survey* is a part of a larger shared community health needs assessment. Results from this survey only represent the views of individuals who chose to share their voices and are not representative of all individuals living in each county. Results from the survey will be used in combination with other data sources, along with information from the NJHC's community health improvement initiatives, to inform the modification of current efforts and the development of future strategies and actions.

Data Collection Process

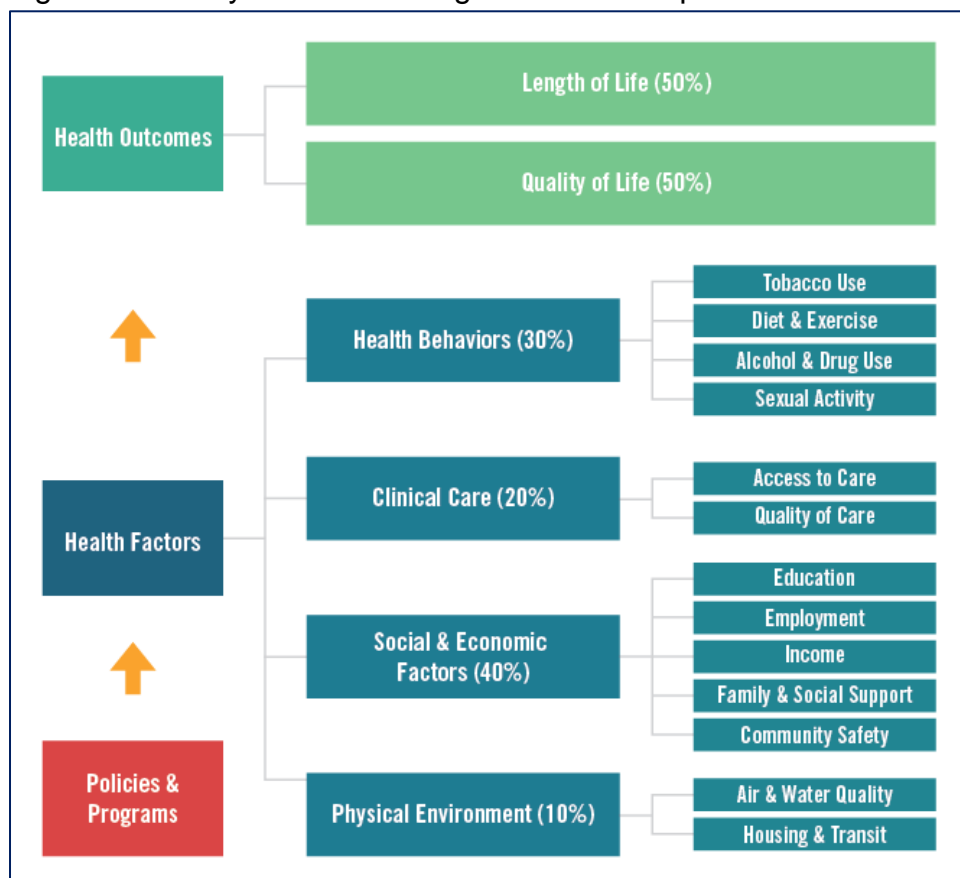
The *Community Voice Survey* was developed by the NJHC Data Committee based on the County Health Rankings and Roadmaps Model (**Figure 1**), which shows the wide range of factors that influence how long and how well individuals live. The main objective of the *Community Voice Survey* was to capture whether or not community members across the five counties served by the NJHC and its partners feel that these elements essential for health are available in their communities.

In addition to questions about their demographics (e.g., age, gender, race/ethnicity), respondents who completed the *Community Voice Survey* were also asked to respond “true” or “false” to questions that measure the four factors that influence health and well-being: physical environment, social and economic factors, clinical care, and health behaviors. The survey collected both quantitative and qualitative data where the qualitative responses provide additional context and nuanced understanding for the quantitative information.

The survey instrument was piloted in Vauxhall (Union County) in the fall of 2017. This was followed by a focus group discussion where respondents provided feedback about the survey process and the survey instrument itself. Comments were shared with the NJHC Data Committee and used to make revisions and modifications to the survey instrument.



Figure 1. County Health Rankings and Roadmaps Model



Source: University of Wisconsin Population Health Institute

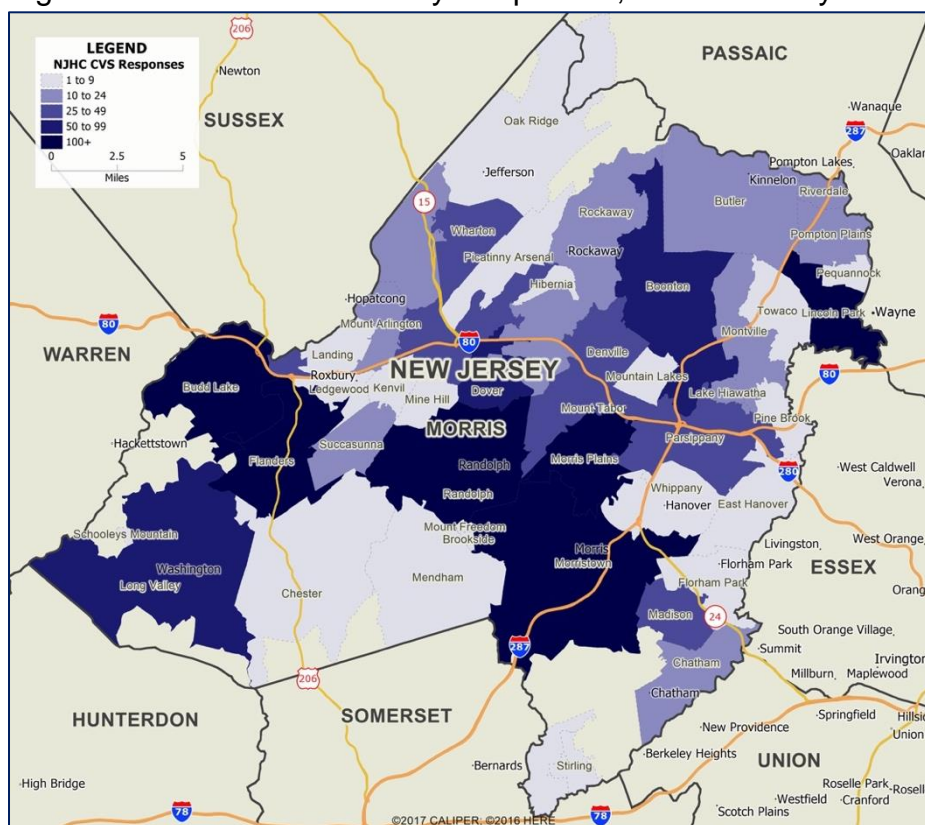
The data collection approach of the *Community Voice Survey* was designed to give voice to all members of the communities. To assure the survey would be able to reach as many community members as possible, especially those who are often not heard, particular attention was given to gathering input from specific populations. Sampling targets were identified based on gender, age, race and ethnicity, and for communities with higher socioeconomic need in order to capture a diverse range of perspectives. For more information about communities in Morris County with higher socioeconomic needs, see the SocioNeeds Index at www.njhealthmatters.org.

The *Community Voice Survey* was available in English, Spanish, Arabic, and French Creole and it was distributed both online and on paper throughout the five counties by the NJHC and more than 50 public health and community-based organizations. The Collaborative and these organizational partners promoted the survey on their websites, on social media, and at community events.

MAIN FINDINGS IN MORRIS COUNTY

A total of 1,811 individuals living in Morris County completed the *Community Voice Survey*. **Figure 2** shows the distribution of survey responses by municipalities in the county. Respondents are mostly female (77%), between 45 and 64 years-old (40%), and identify as non-Hispanic White (80%). Nearly one-third (32%) of the respondents have a graduate or professional degree, with another 31% having a Bachelor’s degree. Nearly two out of five (38%) respondents described their household finances as being “very stable,” meaning that they are able to handle all of their bills and unexpected expenses. Close to all (91%) respondents said they are covered by health insurance and 19% said they are providing unpaid care to a family member or a friend who is disabled, has a chronic illness, or has issues with aging. When asked to rate their overall well-being between 0 and 10, respondents gave an average score of 7.5 (range = 0-10).

Figure 2. Distribution of Survey Responses, Morris County



It is important to keep in mind that the data described above, and throughout the rest of this report, reflect only the views of individuals who participated in the *Community Voice Survey* and that these results are not representative of Morris County as a whole. Furthermore, respondents were not required to answer every question. As such, percentages presented in this report are calculated based on the number of responses to each question and not the number of individuals who completed the survey.

Key Health Factors

The *Community Voice Survey* asked respondents to state whether they felt **42 measures about health and well-being are “true” or “false” about their communities and themselves**. These measures can be categorized into the four health factors in the County Health Rankings and Roadmaps Model: physical environment, social and economic factors, clinical care, and health behaviors. For more information on the four health factors, see **Figure 1** or visit www.countyhealthrankings.org.

Responses to the health and well-being measures are provided first for all responses collected in Morris County. This is followed by comparisons between all responses and responses from specific sub-populations for which sampling targets were met. In Morris County, comparisons in responses are made for one racial/ethnic group (Hispanic), three age groups (18-44, 45-64, and 65-74), and one community (Dover/Wharton, zip codes 07801 and 07885). In addition to comparing survey responses to specific sub-populations, overall county data are also compared against data from municipalities within the county that collected at least 50 responses. In Morris County, these municipalities are: Boonton Township, Dover, Lincoln Park Borough, Morris Plains Borough, Morris Township, Morristown, Mount Olive Township, Parsippany-Troy Hills Township, Randolph Township, and Washington Township.

For comparisons, data are highlighted in red if at least 5% fewer respondents in the comparison group selected “true” on a health and well-being measure than all respondents in the county. Conversely, data are highlighted in green if at least 5% more respondents in the comparison group selected “true” on a health and well-being measure than all respondents in the county.

Physical Environment

Physical environment describes the human-made space in which people live, learn, work, and play. In Morris County, respondents are generally satisfied with the availability of public places where people can go to exercise or get together with others. However, respondents do not think that people in their neighborhoods can walk or bike safely to get to these public places. **Table 1** shows the percentage of respondents who responded “true” to each of the nine measures about physical environment.

Table 1. Physical Environment

Measures	% True
Air is clean and breathable	95%
There are parks, playgrounds, and other places where people can get exercise safely for free or at a good price	94%
There are public places where neighbors can get together; like open spaces, a public library, or a community center	92%
People can buy healthy food at a good price	86%
Roads are safe and well-maintained	76%
People can walk around the neighborhood and cross streets safely	75%
There is good access to transportation; people can get to work, school, businesses, healthcare facilities, and place of worship easily and safely	65%
There is enough affordable housing, and it is safe and well-kept	63%
There are public places people can walk or bike to safely	61%

Comparisons by Respondents’ Race/Ethnicity. Compared to all respondents in Morris County, much less Hispanic respondents think that people in their neighborhoods are able to buy healthy foods at good prices. Hispanic respondents are also less satisfied than all respondents in Morris County with the availability of affordable, safe, and well-kept housing in their communities. **Table 2** presents the comparisons of responses to each of the nine measures about physical environment from Hispanic respondents and all respondents in Morris County.

Table 2. Physical Environment – Comparisons by Respondents' Race/Ethnicity

Measures	% True	
	All	Hispanic
Air is clean and breathable	95%	92%
There are parks, playgrounds, and other places where people can get exercise safely for free or at a good price	94%	92%
There are public places where neighbors can get together; like open spaces, a public library, or a community center	92%	88%
People can buy healthy food at a good price	86%	77%
Roads are safe and well-maintained	76%	78%
People can walk around the neighborhood and cross streets safely	75%	76%
There is good access to transportation; people can get to work, school, businesses, healthcare facilities, and place of worship easily and safely	65%	66%
There is enough affordable housing, and it is safe and well-kept	63%	57%
There are public places people can walk or bike to safely	61%	67%

Comparisons by Respondents' Age Group. Respondents who are 18 to 44 years-old and respondents who are 45 to 64 years old do not have considerably different views about the physical environment of their communities than all respondents who completed the *Community Voice Survey* in Morris County. However, less respondents who are between 65 and 74 years-old than all respondents in the county agree that there is good access to transportation and that there is enough affordable, safe, and well-kept housing in their communities. **Table 3** presents the comparisons of responses to each of the nine measures about physical environment from respondents ages 18-44, 45-64, and 65-74 against all respondents in Morris County.

Table 3. Physical Environment – Comparisons by Respondents' Age Groups

Measures	% True			
	All	18-44	45-64	65-74
Air is clean and breathable	95%	95%	97%	93%
There are parks, playgrounds, and other places where people can get exercise safely for free or at a good price	94%	93%	93%	95%
There are public places where neighbors can get together; like open spaces, a public library, or a community center	92%	90%	92%	95%
People can buy healthy food at a good price	86%	82%	86%	91%
Roads are safe and well-maintained	76%	73%	78%	78%
People can walk around the neighborhood and cross streets safely	75%	72%	74%	79%
There is good access to transportation; people can get to work, school, businesses, healthcare facilities, and place of worship easily and safely	65%	68%	63%	59%
There is enough affordable housing, and it is safe and well-kept	63%	63%	65%	56%
There are public places people can walk or bike to safely	61%	62%	59%	60%

Comparisons to Communities with Higher Socioeconomic Needs. The only zip codes that met the sampling target, were 07081 and 07885 (Dover/Wharton), with 132 total responses. Overall, respondents who live in Dover/Wharton are less satisfied with access to healthy foods at good prices and the availability of affordable, safe, and well-kept housing in their neighborhoods than all respondents in Morris County. However, more Dover/Wharton respondents than all respondents throughout the county agree there is good access to transportation in their communities and that there are public where people can walk or bike to safely. **Table 4** presents the comparisons of responses to each of the nine measures about physical environment from respondents who live in the two zip codes (07801 and 07885) against all respondents in Morris County.

Table 4. Physical Environment – Comparisons to Communities with Higher Socioeconomic Needs

Measures	% True	
	All	07801 & 07885
Air is clean and breathable	95%	90%
There are parks, playgrounds, and other places where people can get exercise safely for free or at a good price	94%	94%
There are public places where neighbors can get together; like open spaces, a public library, or a community center	92%	90%
People can buy healthy food at a good price	86%	80%
Roads are safe and well-maintained	76%	79%
People can walk around the neighborhood and cross streets safely	75%	77%
There is good access to transportation; people can get to work, school, businesses, healthcare facilities, and place of worship easily and safely	65%	80%
There is enough affordable housing, and it is safe and well-kept	63%	53%
There are public places people can walk or bike to safely	61%	72%

Comparisons by County Municipalities. Ten municipalities in Morris County collected at least 50 responses to the *Community Voice Survey*, they are: Boonton Township, Dover, Lincoln Park Borough, Morris Plains Borough, Morris Township, Morristown, Mount Olive Township, Parsippany-Troy Hills Township, Randolph Township, and Washington Township. In general, respondents from Lincoln Park Borough, Morris Plains Borough, and Parsippany-Troy Hills Township are more satisfied with their physical environments, whereas respondents from Boonton Township and Mount Olive Township are less satisfied with the physical environment of their neighborhoods. **Table 5** presents the comparisons of responses to each of the nine measures about physical environment from respondents in these 10 municipalities against all respondents in Morris County.

Table 5. Physical Environment – Comparisons by County Municipalities

Measures	% True										
	All	Boonton	Dover	Lincoln Park	Morris Plains	Morris	Morristown	Mt. Olive	Parsippany-Troy Hills	Randolph	Washington
Air is clean and breathable	95%	98%	88%	95%	96%	96%	98%	96%	95%	95%	100%
There are parks, playgrounds, and other places where people can get exercise safely for free or at a good price	94%	98%	92%	93%	95%	95%	96%	92%	95%	98%	95%
There are public places where neighbors can get together; like open spaces, a public library, or a community center	92%	75%	89%	92%	98%	94%	88%	94%	98%	92%	93%
People can buy healthy food at a good price	86%	90%	79%	90%	92%	90%	85%	82%	86%	83%	83%
Roads are safe and well-maintained	76%	67%	74%	80%	82%	82%	66%	63%	75%	79%	72%
People can walk around the neighborhood and cross streets safely	75%	45%	76%	82%	83%	76%	81%	65%	81%	70%	74%
There is good access to transportation; people can get to work, school, businesses, healthcare facilities, and place of worship easily and safely	65%	59%	80%	78%	81%	67%	85%	49%	79%	44%	37%
There is enough affordable housing, and it is safe and well-kept	63%	66%	48%	76%	60%	53%	51%	68%	61%	63%	67%
There are public places people can walk or bike to safely	61%	38%	72%	72%	86%	64%	85%	43%	69%	47%	45%

Social & Economic Factors

Social and economic factors refer to items such as education, employment, income, family and social support, and community safety. Most respondents in Morris County feel that they are safe from crime and violence in their communities and they are proud to live where they are. In addition, while almost all respondents agree that there are opportunities for people to get a good education, they do not think that people in their communities have access to childcare that is affordable, high quality, and safe. **Table 6** shows the percentage of respondents who responded “true” to each of the 11 measures about social and economic factors in their communities.

Table 6. Social and Economic Factors

Measures	% True
There are opportunities for people to get good education	96%
People feel safe from crime and violence	95%
People feel proud to live here	93%
People know where to get help in times of crisis or emergency	79%
People make enough money to afford basic needs, like food, housing, and transportation	78%
People look out for each other and take care of one another	77%
If there is a problem, community members can get it solved	77%
Neighbors know one another	73%
There are enough jobs and most people who want a job can get one	72%
People know where to go if they have a problem or need assistance on a regular basis	71%
People have access to safe, high-quality childcare at a good price	66%

Comparisons by Respondents’ Race/Ethnicity. Considerably fewer Hispanic survey respondents than all respondents in Morris County feel measures of social and economic factors are “true” about their communities. This is especially evident in terms of respondents feeling like people in their neighborhoods are able to make enough money to afford basic needs such as housing, food, and transportation. **Table 7** presents the



comparisons of responses to each of the 11 measures about social and economic factors from Hispanic respondents against all respondents in Morris County.

Table 7. Social and Economic Factors – Comparisons by Respondents' Race/Ethnicity

Measures	% True	
	All	Hispanic
There are opportunities for people to get good education	96%	90%
People feel safe from crime and violence	95%	92%
People feel proud to live here	93%	88%
People know where to get help in times of crisis or emergency	79%	66%
People make enough money to afford basic needs, like food, housing, and transportation	78%	60%
People look out for each other and take care of one another	77%	62%
If there is a problem, community members can get it solved	77%	67%
Neighbors know one another	73%	59%
There are enough jobs and most people who want a job can get one	72%	58%
People know where to go if they have a problem or need assistance on a regular basis	71%	63%
People have access to safe, high-quality childcare at a good price	66%	54%

Comparisons by Respondents' Age Group. There are no noticeable differences in respondents' feelings about the social and economic factors of their communities based on age groups. **Table 8** presents the comparisons of responses to each of the 11 measures about social and economic factors from respondents ages 18-44, 45-64, and 65-74 against all respondents in Morris County.

Table 8. Social and Economic Factors – Comparisons by Respondents' Age Groups

Measures	% True			
	All	18-44	45-64	65-74
There are opportunities for people to get good education	96%	94%	97%	96%
People feel safe from crime and violence	95%	94%	96%	97%
People feel proud to live here	93%	89%	95%	94%
People know where to get help in times of crisis or emergency	79%	78%	80%	80%
People make enough money to afford basic needs, like food, housing, and transportation	78%	74%	79%	82%
People look out for each other and take care of one another	77%	75%	79%	80%
If there is a problem, community members can get it solved	77%	75%	80%	77%
Neighbors know one another	73%	72%	75%	73%
There are enough jobs and most people who want a job can get one	72%	71%	71%	76%
People know where to go if they have a problem or need assistance on a regular basis	71%	72%	69%	72%
People have access to safe, high-quality childcare at a good price	66%	65%	67%	64%

Comparisons to Communities with Higher Socioeconomic Needs. Respondents living in the zip code 07801 and 07885 areas of Dover/Wharton are less satisfied about several of the social and economic factors about their communities than all respondents living in Morris County. Notably less respondents from this community feel people make enough money to afford basic needs. However, more respondents in this area feel people know where to go for assistance and resources on a regular basis than in the county overall. **Table 9** presents the comparisons of responses to each of the 11 measures about social and economic factors from respondents who live in zip codes 07801 and 07885 against all respondents in Morris County.



Table 9. Social and Economic Factors – Comparisons to Communities with Higher Socioeconomic Needs

Measures	% True	
	All	07801 & 07885
There are opportunities for people to get good education	96%	93%
People feel safe from crime and violence	95%	91%
People feel proud to live here	93%	89%
People know where to get help in times of crisis or emergency	79%	68%
People make enough money to afford basic needs, like food, housing, and transportation	78%	52%
People look out for each other and take care of one another	77%	65%
If there is a problem, community members can get it solved	77%	67%
Neighbors know one another	73%	58%
There are enough jobs and most people who want a job can get one	72%	60%
People know where to go if they have a problem or need assistance on a regular basis	71%	77%
People have access to safe, high-quality childcare at a good price	66%	54%

Comparisons by County Municipalities. Across the 10 municipalities that had at least 50 survey responses, more respondents from Boonton Township, Morris Plains Borough, Morris Township, and Washington Township agree with the statements about the social and economic factors about their neighborhoods than all respondents in Morris County. On the other hand, fewer respondents who live in Dover and in Morristown than overall in Morris County agree with these statements. **Table 10** presents the comparisons of responses to each of the 11 measures about social and economic factors from the municipalities against all responses from Morris County.

Table 10. Social and Economic Factors – Comparisons by County Municipalities

Measures	% True										
	All	Boonton	Dover	Lincoln Park	Morris Plains	Morris	Morristown	Mt. Olive	Parsippany-Troy Hills	Randolph	Washington
There are opportunities for people to get good education	96%	98%	93%	92%	97%	97%	87%	97%	98%	98%	97%
People feel safe from crime and violence	95%	100%	88%	98%	96%	97%	85%	94%	91%	99%	99%
People feel proud to live here	93%	100%	87%	90%	97%	97%	96%	91%	94%	93%	95%
People know where to get help in times of crisis or emergency	79%	84%	61%	82%	80%	94%	77%	80%	86%	78%	83%
People make enough money to afford basic needs, like food, housing, and transportation	78%	88%	49%	84%	87%	83%	66%	74%	81%	82%	86%
People look out for each other and take care of one another	77%	84%	63%	84%	79%	75%	70%	77%	71%	80%	84%
If there is a problem, community members can get it solved	77%	81%	60%	72%	78%	82%	70%	80%	78%	76%	83%
Neighbors know one another	73%	76%	55%	81%	78%	73%	67%	71%	71%	66%	76%
There are enough jobs and most people who want a job can get one	72%	84%	55%	71%	76%	79%	65%	66%	72%	75%	83%
People know where to go if they have a problem or need assistance on a regular basis	71%	73%	71%	66%	72%	77%	72%	68%	76%	69%	72%
People have access to safe, high-quality childcare at a good price	66%	70%	51%	71%	71%	67%	61%	64%	52%	75%	70%

Clinical Care

Clinical Care refers to issues such as health insurance, access to healthcare, and the affordability and quality of health services and providers. Morris County respondents overwhelmingly agree that the quality of the healthcare they receive is good; however, they are far less satisfied with people in their neighborhood’s ability to access healthcare in terms of being able to have affordable health insurance and being able to have good quality specialty services like mental health and substance use disorder care. **Table 11** shows the percentage of respondents who responded “true” to each of the nine measures about clinical care in their communities.

Table 11. Clinical Care

Measures	% True
The healthcare that people receive is of good quality	91%
Most people have a doctor they consider to be their personal doctor	88%
People can get health information in a language they understand and healthcare decisions fit with the culture of the person getting the care	87%
There are places close-by where people can get healthcare	87%
People have access to good quality emergency care	85%
People have access to good quality dental care at a reasonable price	69%
People have access to good quality care for substance use disorders	66%
People have access to good quality mental health care	63%
People can get health insurance that is affordable and covers care they need	51%

Comparisons by Respondents’ Race/Ethnicity. Hispanic respondents living in Morris County are overall less satisfied with clinical care factors in their communities, especially about having a primary care (or personal) doctor, being able to access good quality emergency care, and being able to access good-quality and reasonably priced dental care. **Table 12** presents the comparisons of responses to each of the nine measures about clinical care from Hispanic respondents against all respondents in Morris County.



Table 12. Clinical Care – Comparisons by Respondents' Race/Ethnicity

Measures	% True	
	All	Hispanic
The healthcare that people receive is of good quality	91%	82%
Most people have a doctor they consider to be their personal doctor	88%	70%
People can get health information in a language they understand and healthcare decisions fit with the culture of the person getting the care	87%	77%
There are places close-by where people can get healthcare	87%	85%
People have access to good quality emergency care	85%	70%
People have access to good quality dental care at a reasonable price	69%	56%
People have access to good quality care for substance use disorders	66%	59%
People have access to good quality mental health care	63%	54%
People can get health insurance that is affordable and covers care they need	51%	47%

Comparisons by Respondents' Age Group. There are not a lot of marked differences in respondents' perceptions about clinical care in their communities by age groups. The most noticeable difference is that a lot more respondents who are 18 to 44 years-old than among respondents in other age groups and all Morris County respondents feel they are able to get affordable health insurance that covers the care they need. Additionally, fewer respondents between 18 and 44 years-old than among respondents in other age groups and all respondents in Morris County agree people in their communities have access to good quality emergency care. **Table 13** presents the comparisons of responses to each of the nine measures about clinical care from respondents ages 18-44, 45-64, and 65-74 against all respondents in Morris County.

Table 13. Clinical Care – Comparisons by Respondents' Age Groups

Measures	% True			
	All	18-44	45-64	65-74
The healthcare that people receive is of good quality	91%	87%	93%	90%
Most people have a doctor they consider to be their personal doctor	88%	85%	90%	88%
People can get health information in a language they understand and healthcare decisions fit with the culture of the person getting the care	87%	86%	87%	89%
There are places close-by where people can get healthcare	87%	87%	88%	88%
People have access to good quality emergency care	85%	80%	85%	91%
People have access to good quality dental care at a reasonable price	69%	71%	70%	62%
People have access to good quality care for substance use disorders	66%	66%	62%	68%
People have access to good quality mental health care	63%	63%	61%	63%
People can get health insurance that is affordable and covers care they need	51%	86%	47%	42%

Comparisons to Communities with Higher Socioeconomic Needs. In general, respondents living in zip codes 07801 and 07885 are less satisfied with most of the clinical care factors in their communities than all respondents in Morris County. However, more respondents in this area feel they are able to find healthcare that is nearby. **Table 14** presents the comparisons of responses to each of the nine measures about clinical care from respondents who live in zip codes 07801 and 07885 against all respondents in Morris County.



Table 14. Clinical Care – Comparisons to Communities with Higher Socioeconomic Needs

Measures	% True	
	All	07801 & 07885
The healthcare that people receive is of good quality	91%	76%
Most people have a doctor they consider to be their personal doctor	88%	61%
People can get health information in a language they understand and healthcare decisions fit with the culture of the person getting the care	87%	84%
There are places close-by where people can get healthcare	87%	92%
People have access to good quality emergency care	85%	74%
People have access to good quality dental care at a reasonable price	69%	54%
People have access to good quality care for substance use disorders	66%	62%
People have access to good quality mental health care	63%	58%
People can get health insurance that is affordable and covers care they need	51%	44%

Comparisons by County Municipalities. There are many differences in how survey respondents feel about the accessibility, affordability and quality of clinical care in their neighborhoods by municipalities. Overall, fewer respondents in Dover and in Parsippany-Troy Hills Township than all respondents in Morris County agree with the clinical care statements while more respondents in Boonton Township and Morris Township agree with the statements. **Table 15** presents the comparisons of responses to each of the nine measures about clinical care from the 10 municipalities against all respondents in Morris County.

Table 15. Clinical Care – Comparisons by County Municipalities

Measures	% True										
	All	Boonton	Dover	Lincoln Park	Morris Plains	Morris	Morristown	Mt. Olive	Parsippany-Troy Hills	Randolph	Washington
The healthcare that people receive is of good quality	91%	98%	68%	92%	93%	96%	87%	91%	81%	92%	92%
Most people have a doctor they consider to be their personal doctor	88%	91%	57%	94%	88%	90%	72%	94%	87%	90%	95%
People can get health information in a language they understand and healthcare decisions fit with the culture of the person getting the care	87%	85%	84%	91%	83%	94%	87%	87%	86%	84%	89%
There are places close-by where people can get healthcare	87%	91%	94%	86%	89%	97%	95%	84%	71%	82%	81%
People have access to good quality emergency care	85%	92%	64%	86%	92%	91%	85%	79%	86%	84%	84%
People have access to good quality dental care at a reasonable price	69%	70%	55%	78%	64%	70%	66%	71%	60%	68%	83%
People have access to good quality care for substance use disorders	66%	79%	58%	63%	67%	73%	70%	64%	69%	68%	56%
People have access to good quality mental health care	63%	74%	82%	64%	62%	74%	66%	55%	71%	62%	61%
People can get health insurance that is affordable and covers care they need	51%	52%	43%	54%	56%	55%	58%	50%	42%	48%	50%

Health Behaviors

Health behaviors are activities or personal attributes that can either enhance or damage a person’s physical or mental health. Almost all respondents from Morris County feel they are able to take care of themselves on most days, but far fewer respondents feel they get enough sleep or physical activity. **Table 16** shows the percentage of respondents who responded “true” to each of the 13 measures about their own health behaviors.

Table 16. Health Behaviors

Measures	% True
Most days, I’m able to take care of myself	99%
I do not take more medication than what my doctor tells me, or use medication that was not prescribed to me	98%
I do not use drugs to excess; my drug use does not cause problems in my life	96%
I do not drink to excess; my alcohol use does not cause problems in my life	95%
If I engage in sexual activities, I do it safely	95%
I do not use cigarettes, vaporizers, or smokeless tobacco	92%
I eat healthy foods most days	90%
I am able to manage my stress most days	87%
I know where to find information on substance use prevention for myself or someone I know	78%
I know how to find substance use treatment for myself or a loved one	75%
I am aware of places to properly dispose of unwanted prescription medications	75%
I get enough sleep and feel well-rested most days	70%
I get enough exercise and lead an active lifestyle	66%

Comparisons by Respondents’ Race/Ethnicity. Fewer Hispanic respondents than all respondents in Morris County feel statements about their own health behaviors are “true.” The largest difference can be seen in the proportion of respondents who feel they know where to dispose of unwanted prescription medications. **Table 17** presents the



comparisons of responses to each of the 13 measures about health behaviors from Hispanic respondents against all respondents in Morris County.

Table 17. Health Behaviors – Comparisons by Respondents' Race/Ethnicity

Measures	% True	
	All	Hispanic
Most days, I'm able to take care of myself	99%	97%
I do not take more medication than what my doctor tells me, or use medication that was not prescribed to me	98%	93%
I do not use drugs to excess; my drug use does not cause problems in my life	96%	81%
I do not drink to excess; my alcohol use does not cause problems in my life	95%	86%
If I engage in sexual activities, I do it safely	95%	93%
I do not use cigarettes, vaporizers, or smokeless tobacco	92%	82%
I eat healthy foods most days	90%	88%
I am able to manage my stress most days	87%	84%
I know where to find information on substance use prevention for myself or someone I know	78%	64%
I know how to find substance use treatment for myself or a loved one	75%	60%
I am aware of places to properly dispose of unwanted prescription medications	75%	55%
I get enough sleep and feel well-rested most days	70%	70%
I get enough exercise and lead an active lifestyle	66%	56%

Comparisons by Respondents' Age Group. There are a few differences in how respondents feel about their behaviors by age group. More respondents in each group than among all respondents in Morris County feel they get enough sleep and are well-rested most days; this is especially the case for respondents who are 18 to 44 and 45 to 64 years-old. **Table 18** presents the comparisons of responses to each of the 13 measures about health behaviors from respondents ages 18-44, 45-64, and 65-74 against all respondents in Morris County.

Table 18. Health Behaviors – Comparisons by Respondents' Age Groups

Measures	% True			
	All	18-44	45-64	65-74
Most days, I'm able to take care of myself	99%	99%	99%	99%
I do not take more medication than what my doctor tells me, or use medication that was not prescribed to me	98%	97%	98%	98%
I do not use drugs to excess; my drug use does not cause problems in my life	96%	94%	98%	99%
I do not drink to excess; my alcohol use does not cause problems in my life	95%	93%	96%	98%
If I engage in sexual activities, I do it safely	95%	97%	96%	93%
I do not use cigarettes, vaporizers, or smokeless tobacco	92%	89%	91%	96%
I eat healthy foods most days	90%	87%	90%	93%
I am able to manage my stress most days	87%	85%	87%	91%
I know where to find information on substance use prevention for myself or someone I know	78%	76%	78%	81%
I know how to find substance use treatment for myself or a loved one	75%	74%	76%	78%
I am aware of places to properly dispose of unwanted prescription medications	75%	64%	77%	83%
I get enough sleep and feel well-rested most days	70%	95%	97%	78%
I get enough exercise and lead an active lifestyle	66%	63%	65%	68%

Comparisons to Communities with Higher Socioeconomic Needs. Less respondents living in zip codes 07801 and 07885 agree with the statements about their health behaviors, particularly on drug use. Slightly more respondents living in this community say they get enough sleep on most days than all respondents across the county. **Table 19** presents the comparisons of responses to each of the 13 measures about health behaviors from respondents who live in zip codes 07801 and 07885 against all Morris County respondents.



Table 19. Health Behaviors – Comparisons to Communities with Higher Socioeconomic Needs

Measures	% True	
	All	07801 & 07885
Most days, I'm able to take care of myself	99%	97%
I do not take more medication than what my doctor tells me, or use medication that was not prescribed to me	98%	91%
I do not use drugs to excess; my drug use does not cause problems in my life	96%	79%
I do not drink to excess; my alcohol use does not cause problems in my life	95%	81%
If I engage in sexual activities, I do it safely	95%	94%
I do not use cigarettes, vaporizers, or smokeless tobacco	92%	83%
I eat healthy foods most days	90%	89%
I am able to manage my stress most days	87%	84%
I know where to find information on substance use prevention for myself or someone I know	78%	70%
I know how to find substance use treatment for myself or a loved one	75%	64%
I am aware of places to properly dispose of unwanted prescription medications	75%	58%
I get enough sleep and feel well-rested most days	70%	75%
I get enough exercise and lead an active lifestyle	66%	67%

Comparisons by County Municipalities. While more respondents living in Boonton Township and in Parsippany-Troy Hills Township agree the statements on their health behaviors are “true,” less respondents living in Dover and in Morristown feel the same way. **Table 20** presents the comparisons of responses to each of the 13 measures about health behaviors from respondents living in the 10 municipalities against all responses from Morris County.

Table 20. Health Behaviors – Comparisons by County Municipalities

Measures	% True										
	All	Boonton	Dover	Lincoln Park	Morris Plains	Morris	Morristown	Mt. Olive	Parsippany-Troy Hills	Randolph	Washington
Most days, I'm able to take care of myself	99%	100%	96%	100%	100%	98%	99%	98%	100%	98%	99%
I do not take more medication than what my doctor tells me, or use medication that was not prescribed to me	98%	100%	87%	100%	97%	97%	97%	97%	98%	99%	97%
I do not use drugs to excess; my drug use does not cause problems in my life	96%	100%	71%	98%	97%	97%	91%	98%	100%	98%	99%
I do not drink to excess; my alcohol use does not cause problems in my life	95%	100%	76%	97%	94%	97%	93%	97%	98%	96%	97%
If I engage in sexual activities, I do it safely	95%	92%	94%	95%	92%	96%	99%	94%	96%	97%	99%
I do not use cigarettes, vaporizers, or smokeless tobacco	92%	95%	78%	90%	95%	96%	82%	91%	98%	90%	95%
I eat healthy foods most days	90%	96%	89%	90%	86%	94%	93%	95%	89%	94%	86%
I am able to manage my stress most days	87%	89%	79%	90%	85%	90%	86%	86%	93%	89%	88%
I know where to find information on substance use prevention for myself or someone I know	78%	87%	63%	79%	80%	83%	72%	77%	81%	73%	68%
I know how to find substance use treatment for myself or a loved one	75%	81%	56%	73%	72%	83%	66%	77%	78%	73%	65%
I am aware of places to properly dispose of unwanted prescription medications	75%	82%	49%	73%	90%	81%	61%	71%	85%	73%	81%
I get enough sleep and feel well-rested most days	70%	66%	72%	68%	73%	74%	68%	68%	80%	65%	73%
I get enough exercise and lead an active lifestyle	66%	73%	63%	69%	61%	73%	58%	57%	76%	69%	68%

Most Commonly Identified Health Issues

In addition to asking survey respondents whether they felt the health and well-being measures are “true” or “false,” the *Community Voice Survey* also asked them to select up to five of the 42 measures as priority issues that the NJHC and its partners should focus on to improve the health and well-being of their communities. In Morris County, the five most frequently selected issues are:

1. Mental health care (19%)
2. Pedestrian Safety (16%)
3. Roads (16%)
4. Housing (16%)
5. Health insurance (15%)

When asked if they think the health issues they selected may be a bigger problem for some individuals than others, 39% of respondents think that the health issues affect everyone in their communities about the same and 33% think that these issues may impact seniors, immigrants, and low-income individuals and families more.



CONCLUSION

The *Community Voice Survey* is a part of a larger shared community health needs assessment and it was designed to capture the input of people who live and work in communities across Morris, Passaic, Sussex, Union, and Warren counties about their perspectives on the health and well-being of their communities and of themselves. Results presented in this report reflect the views of the 1,811 individuals living in Morris County who completed the survey and is therefore not representative of all individuals living in the county.

Respondents to the *Community Voice Survey* identified their concerns about the conditions of the environments in which they live, work, and play. Some of the top issues identified by Morris County survey respondents include:

- Access to affordable health insurance that covers the care that people need,
- Access to places where people can buy healthy foods at good prices,
- Availability of affordable housing that is safe and well-kept,
- Availability of public places that people can safely walk or bike to,
- Access to transportation so people can get to work, school, businesses, healthcare facilities, and places of worship easily and safely, and
- Access to safe and high-quality childcare at good prices.

Responses collected from specific populations found that Hispanic respondents and respondents living in zip codes 07801 and 07885 (Dover/Wharton) are more challenged in almost all the measures that affect health and well-being in comparison to the overall responses collected from all respondents in Morris County.

Survey responses, when combined with other data sources, will inform the North Jersey Health Collaborative and its partners to develop and implement more effective strategies on issues that really matter to community members' health and well-being.

APPENDIX

Community Voice Survey Questionnaire



North Jersey Health Collaborative



health matters

Community Voice Initiative

Introduction

We’re reaching out to you because you are connected with **[organization name]**. [Organization name] is a partner of the North Jersey Health Collaborative, a group of more than 150 organizations working together to create healthy communities and healthy people [www.njhealthmatters.org]. Every three years, we try to figure out what topics we should focus on to improve health in northern New Jersey.

To make sure we choose the things that really matter, we need to hear from people who live and work in our communities. This is your chance to tell us what you think we should focus on. This should take about 12 minutes and you can skip any questions you do not want to answer. **Your answers are completely confidential** (they won’t be shared with your name) and **whether or not you want to share your voice is up to you**. If you would like to get a copy of the results, be involved in future conversations, or enter for a **chance to win \$100**, you can add your contact information at the end.

- I understand and I am ready to share my voice
- I do not want to participate

About You

This section asks questions about you and where you live. We are asking for this information to make sure that we talk to a wide variety of people (of different ages, ethnicities, etc.). It will not be used to identify you.

1) Where do you live?

County Name: _____
 Town/Municipality Name: _____
 Zip Code: _____
 Neighborhood Name (if applicable): _____

2) How old are you?

- | | | | |
|--------------------------------|--------------------------------|--------------------------------|--------------------------------------|
| <input type="checkbox"/> 18-19 | <input type="checkbox"/> 35-39 | <input type="checkbox"/> 55-59 | <input type="checkbox"/> 75-79 |
| <input type="checkbox"/> 20-24 | <input type="checkbox"/> 40-44 | <input type="checkbox"/> 60-64 | <input type="checkbox"/> 80-84 |
| <input type="checkbox"/> 25-29 | <input type="checkbox"/> 45-49 | <input type="checkbox"/> 65-69 | <input type="checkbox"/> 85 or older |
| <input type="checkbox"/> 30-34 | <input type="checkbox"/> 50-54 | <input type="checkbox"/> 70-74 | |

3) What is your gender identity?

- Male
- Female
- You do not have an option that applies to me
(please specify) _____

4) Are you of Hispanic, Latino, or Spanish origin?

- Yes No

5) What is your race? How would you describe yourself? [Please check all that apply]

- White Black, African American American Indian/Alaskan Native
 Asian Native Hawaiian, Pacific Islander
 You do not have an option that applies to me (please specify) _____

6) What is the highest level of education that you have finished?

- Less than 9th grade 9th-12th grade, no diploma
 High school graduate (GED or equivalent) Associate’s degree / Vocational training
 Some college, no degree Bachelor’s degree
 Graduate or professional degree Other (please specify) _____

7) Which of the following describes your household financial situation?

- Struggling hard (behind on most bills, hard to put food on the table)
 Barely getting by (make late payments on some bills, but have food & housing)
 Getting by (can pay for necessities, as long as nothing goes wrong)
 Somewhat stable (can handle most bills and some unexpected expenses or emergencies)
 Very stable (can afford all bills and unexpected expenses or emergencies)

8) Do you currently have health insurance?

- Yes No

9) Do you provide unpaid assistance to a family member or friend who has physical, developmental or psychiatric disabilities, chronic illness, or issues of aging?

- Yes No

Physical Environment

Next, we want to know about some of the things in your neighborhood that can influence your health, from the air you breathe, to the roads and sidewalks you walk on every day. This is called the **physical environment**. Take a look at the list below and mark if the statement is true or false for your neighborhood. If you don’t know, leave it blank.

In my neighborhood...

Air is clean and breathable [Air Quality]	<input type="checkbox"/> True	<input type="checkbox"/> False
There are parks, playgrounds and other places where people can get exercise safely for free or at a good price [Exercise opportunities]	<input type="checkbox"/> True	<input type="checkbox"/> False

People can buy healthy food at a good price [Food Access]	<input type="checkbox"/> True	<input type="checkbox"/> False
There is enough affordable housing and it is safe and well-kept [Housing]	<input type="checkbox"/> True	<input type="checkbox"/> False
There are public places where neighbors can get together, like open spaces, a public library or a community center [Meeting Places]	<input type="checkbox"/> True	<input type="checkbox"/> False
Roads are safe and well-maintained [Roads]	<input type="checkbox"/> True	<input type="checkbox"/> False
People can walk around the neighborhood and cross streets safely [Pedestrian Safety]	<input type="checkbox"/> True	<input type="checkbox"/> False
There are public places people can walk or bike to safely (they don't need a car) [Active Transportation]	<input type="checkbox"/> True	<input type="checkbox"/> False
There is a good access to transportation –people can get to work, school, businesses, healthcare facilities and places of worship easily and safely [Vehicle/Transit Access]	<input type="checkbox"/> True	<input type="checkbox"/> False

Social and Economic Factors

Now, tell us about some issues related to people in your neighborhood—how they get along with one another and their ability to get an education and make a living. These are called **social and economic factors**. Take a look at the list below and mark if the statement is true or false for your neighborhood. If you don't know, leave it blank.

In my neighborhood...

People feel safe from crime and violence [Community Safety]	<input type="checkbox"/> True	<input type="checkbox"/> False
There are opportunities for people to get a good education [Education]	<input type="checkbox"/> True	<input type="checkbox"/> False
Neighbors know one another [Social Connection]	<input type="checkbox"/> True	<input type="checkbox"/> False
There are enough jobs and most people who want a job can get one [Employment]	<input type="checkbox"/> True	<input type="checkbox"/> False
People make enough money to afford basic needs, like food, housing, and transportation [Income]	<input type="checkbox"/> True	<input type="checkbox"/> False
People look out for each other and take care of one another [Social Support]	<input type="checkbox"/> True	<input type="checkbox"/> False
People have access to safe, high-quality child care at a good price [Child Care]	<input type="checkbox"/> True	<input type="checkbox"/> False
People know where to go if they have a problem or need assistance on a regular basis [Access to Resources]	<input type="checkbox"/> True	<input type="checkbox"/> False
People know where to get help in times of crisis or emergency [Community Readiness]	<input type="checkbox"/> True	<input type="checkbox"/> False
People feel proud to live here [Community Pride]	<input type="checkbox"/> True	<input type="checkbox"/> False
If there is a problem, community members can get it solved [Community Influence]	<input type="checkbox"/> True	<input type="checkbox"/> False

Clinical Care

Next, tell us a bit about healthcare in your neighborhood, including emergency treatment, doctor's appointments, specialty care, tests and procedures. This is called **clinical care**. Take a look at the list below and mark if the statement is true or false for your neighborhood. If you don't know, leave it blank.

In my neighborhood...

People can get health information in a language they understand and healthcare decisions fit with the culture of the person getting the care [Culturally-Relevant Care]	<input type="checkbox"/> True	<input type="checkbox"/> False
People can get health insurance that is affordable and covers the care that they need [Health Insurance]	<input type="checkbox"/> True	<input type="checkbox"/> False
There are places close-by where people can get healthcare [Local Care Options]	<input type="checkbox"/> True	<input type="checkbox"/> False
Most people have a doctor they consider to be their personal doctor, who they can go to get healthy and stay healthy through regular check-ups [Primary Care]	<input type="checkbox"/> True	<input type="checkbox"/> False
The healthcare that people receive is of good quality [Quality of Care]	<input type="checkbox"/> True	<input type="checkbox"/> False
People have access to good quality dental care at a reasonable price [Dental Care]	<input type="checkbox"/> True	<input type="checkbox"/> False
People have access to good quality care for substance use disorders (or substance use) that is close by and available at a reasonable price [Drug/Alcohol Treatment]	<input type="checkbox"/> True	<input type="checkbox"/> False
People have access to good quality emergency care that is close by and available at a reasonable price [Emergency Care]	<input type="checkbox"/> True	<input type="checkbox"/> False
People have access to good quality mental health care that is close by and available at a reasonable price [Mental Health Care]	<input type="checkbox"/> True	<input type="checkbox"/> False

Health Behaviors

We've asked you to talk about your neighborhood. Now, we would like to know about your own health behaviors. **Health behaviors** are the decisions and actions that you make that can influence your health for better or worse. Take a look at the list below and mark if the statement is true or false for you personally. If you don't know, leave it blank.

For me personally...

I do not use alcohol to excess; my use of alcohol does not cause any problems in my life [Alcohol Use]	<input type="checkbox"/> True	<input type="checkbox"/> False
I do not use drugs to excess; my use of drugs does not cause any problems in my life [Drug Use]	<input type="checkbox"/> True	<input type="checkbox"/> False
I eat healthy foods most days [Nutrition]	<input type="checkbox"/> True	<input type="checkbox"/> False
I get enough exercise and lead an active lifestyle [Physical Activity]	<input type="checkbox"/> True	<input type="checkbox"/> False

If I engage in sexual activity, I do it safely (take measures to protect myself and others from disease) [Sexual Activity]	<input type="checkbox"/> True	<input type="checkbox"/> False
I get enough sleep and feel well-rested most days [Sleep]	<input type="checkbox"/> True	<input type="checkbox"/> False
I am able to manage my stress most days [Stress]	<input type="checkbox"/> True	<input type="checkbox"/> False
I do not use cigarettes, vaporizers (e-cigs), or smokeless tobacco (like chew or dip) [Tobacco/Nicotine Use]	<input type="checkbox"/> True	<input type="checkbox"/> False
If I need information on substance use prevention for myself or someone I know, I know where to find it [Substance Use Prevention]	<input type="checkbox"/> True	<input type="checkbox"/> False
Most days, I'm able to take care of myself [Self Care]	<input type="checkbox"/> True	<input type="checkbox"/> False
If I need substance use treatment for myself or a loved one, I know how to find it [Substance Use Treatment]	<input type="checkbox"/> True	<input type="checkbox"/> False
I do not take more medication than what my doctor tells me to take, or use medication that was not prescribed to me [Prescription Drug Misuse]	<input type="checkbox"/> True	<input type="checkbox"/> False
I am aware of locations to properly dispose of unused/unwanted prescription medication [Medication Disposal]	<input type="checkbox"/> True	<input type="checkbox"/> False

Your well-being

Imagine a ladder with steps numbered from 0 at the bottom to 10 at the top. The top of the ladder (10) represents the best possible life for you. The bottom of the ladder (0) represents the worst possible life for you. On which step of the ladder would you say you stand at this time?

0	1	2	3	4	5	6	7	8	9	10
---	---	---	---	---	---	---	---	---	---	----

Which topics should we work on?

Think about your answers to the previous sections. Of all the topics listed, which do you think should be our main focus when trying to improve the health of your neighborhood? [Circle up to THREE]

- Air Quality
- Exercise Opportunities
- Food Access
- Housing
- Meeting Places
- Roads
- Pedestrian Safety
- Active Transportation
- Vehicle/Transit Access
- Community Safety
- Education
- Social Support
- Child Care
- Access to Resources
- Community Readiness
- Community Pride
- Community Influence
- Culturally-Relevant Care
- Health Insurance
- Local Care Options
- Primary Care
- Quality of Care
- Mental Health Care
- Alcohol Use
- Drug Use
- Nutrition
- Physical Activity
- Sexual Activity
- Sleep
- Stress
- Tobacco/Nicotine Use
- Substance Use Prevention
- Self Care

- Social Connection
- Employment
- Income
- Dental Care
- Drug/Alcohol Treatment
- Emergency Care
- Substance Use Treatment
- Prescription Drug Misuse
- Medication Disposal

10) Why you think these issues should be our focus when trying to improve the health of your neighborhood? (Write below)

11) Are these issues a bigger problem for some people in your neighborhood compared to others?
(For example, a topic may be a bigger problem for single parents, women, or new immigrants)

- No, these issues affect everyone about the same
- Yes, one or more of these issues are a bigger problem for people who are... (write below and explain)

I don't know

13) Is there anything else you want to tell us about your community (good or bad)?

Optional: Join Us to Make a Difference

We are looking for people to help us *make a difference* on these topics and we would like to hear more from you about what you think we need to do to improve health in your neighborhood. If you would be willing for us to contact you for more information or if you would like a **chance to win \$100 or a signed Jets football**, please enter your contact information below:

First name: _____

E-mail address: _____

Phone Number: _____

Select the type of follow-up you would like [select all that apply]:

- I would like to see a summary of what other people had to say
- I would like to be entered into a drawing for a \$100 grand prize or signed Jets football
- I would like to join the North Jersey Health Collaborative to help make a difference on these topics

Thank you for your participation!

If you need help or resources in your community, dial 2-1-1 or visit <http://www.njhealthmatters.org/nj211>